

THE INDIANA HEALTH EQUITY COUNCIL COMMUNITY HEALTH WORKER MODEL FOR ADDRESSING COVID-19-RELATED DISPARITIES: PHASE 1 FINDINGS

Aina AB¹, Boozer L³, Buenavides K³, Byrd KAD¹, Companik ME¹, Conklin M¹, Crowder S³, Daniels S³, Fonseca-Tames C³, Fraiser C², Harrison C³, Hart M², Holt A³, Hunt O³, Kimera LF¹, Ligon L³, Meredith AH¹, Rodriguez NM¹, Sanders C³, Zarate O³, Ziolkowski RA¹, Adeoye-Olatunde OA¹
 Purdue University¹, Indiana Community Health Workers Association², Indiana Department of Health Office of Minority Health³

BACKGROUND

- Problem:** COVID-19 widened health disparities
- Inadequate community health preparedness plan and community health workforce
- Solution:** Leveraged a multisector collaboration:
 - Indiana Department of Health Office of Minority Health (OMH)
 - Indiana Community Health Workers Association
 - Purdue University Community Health Workforce Development Institute
- Infrastructure for the Indiana Health Equity Council (INHEC) Community Health Worker (CHW) Model
 - Nine trained OMH Health Equity CHWs in nine state Public Health Preparedness Districts
 - Generate and implement evidence-based efforts addressing COVID-19-related health disparities

OBJECTIVE

- To generate areas of concentration for CHW-led efforts addressing COVID-19-related disparities in Indiana Public Health Preparedness Districts.

METHODS

- Qualitative study among INHEC members
- Data collection:** demographic surveys and audio-recorded focus groups facilitated by trained Health Equity CHWs (Image 1.)
- Data analysis:** transcripts coded deductively
- Emergent themes identified across four categories: 1) current efforts, 2) facilitators of efforts, 3) barriers to efforts, and 4) areas of concentration for efforts moving forward via district action plans (DAPs)
- Member checking to assess accuracy of findings

Image 1. Health Equity CHWs receiving protocol training before facilitating council focus groups

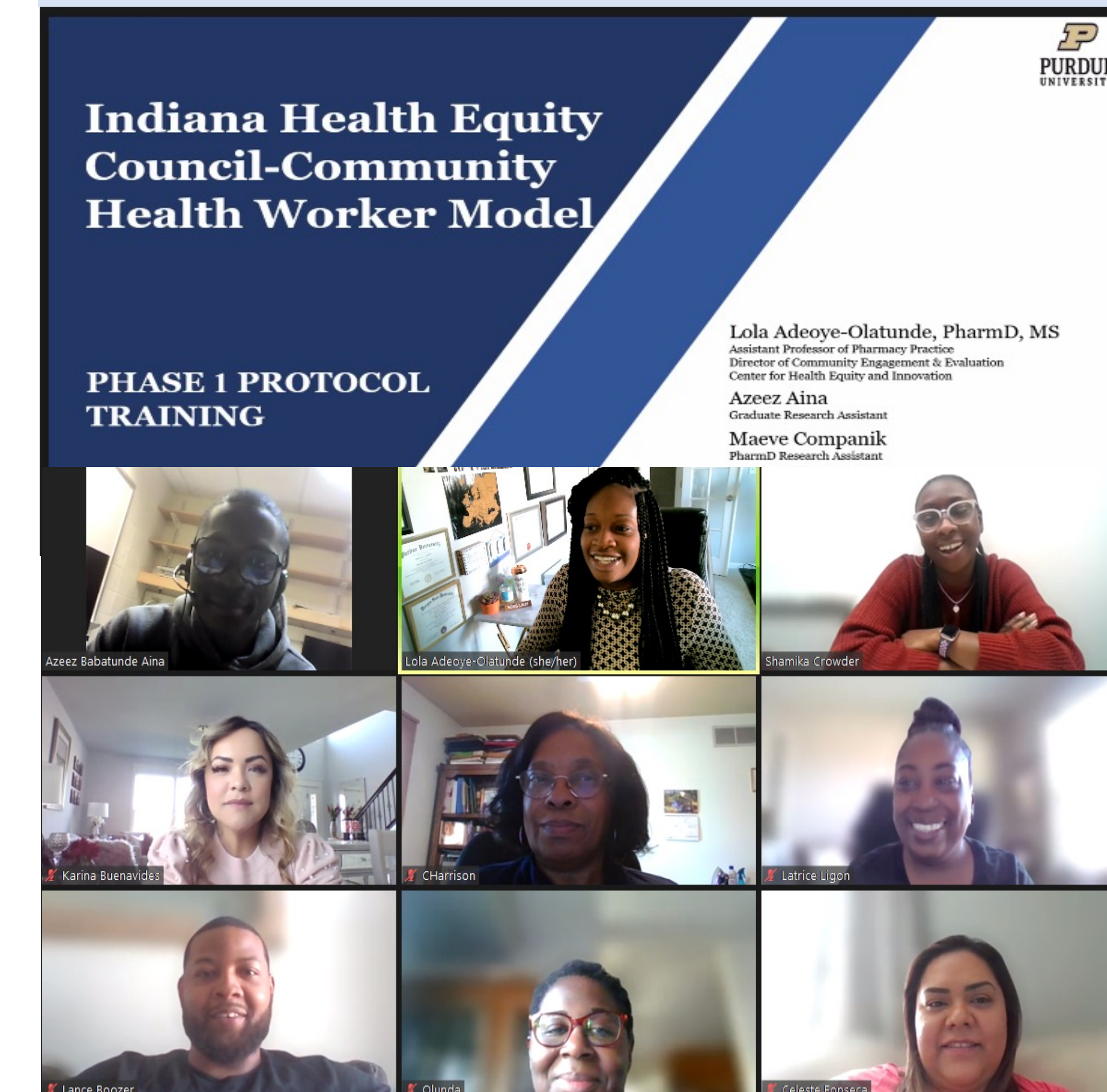


Figure 1. Focus group characteristics and participant demographics

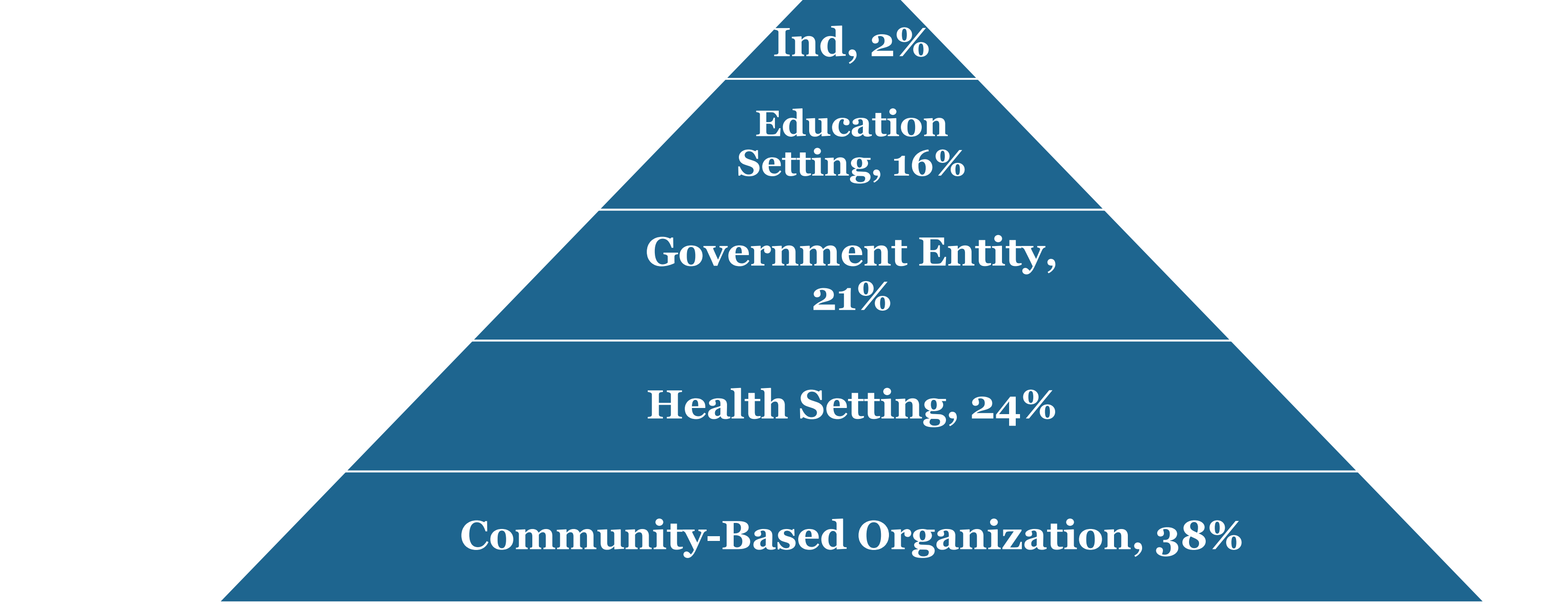
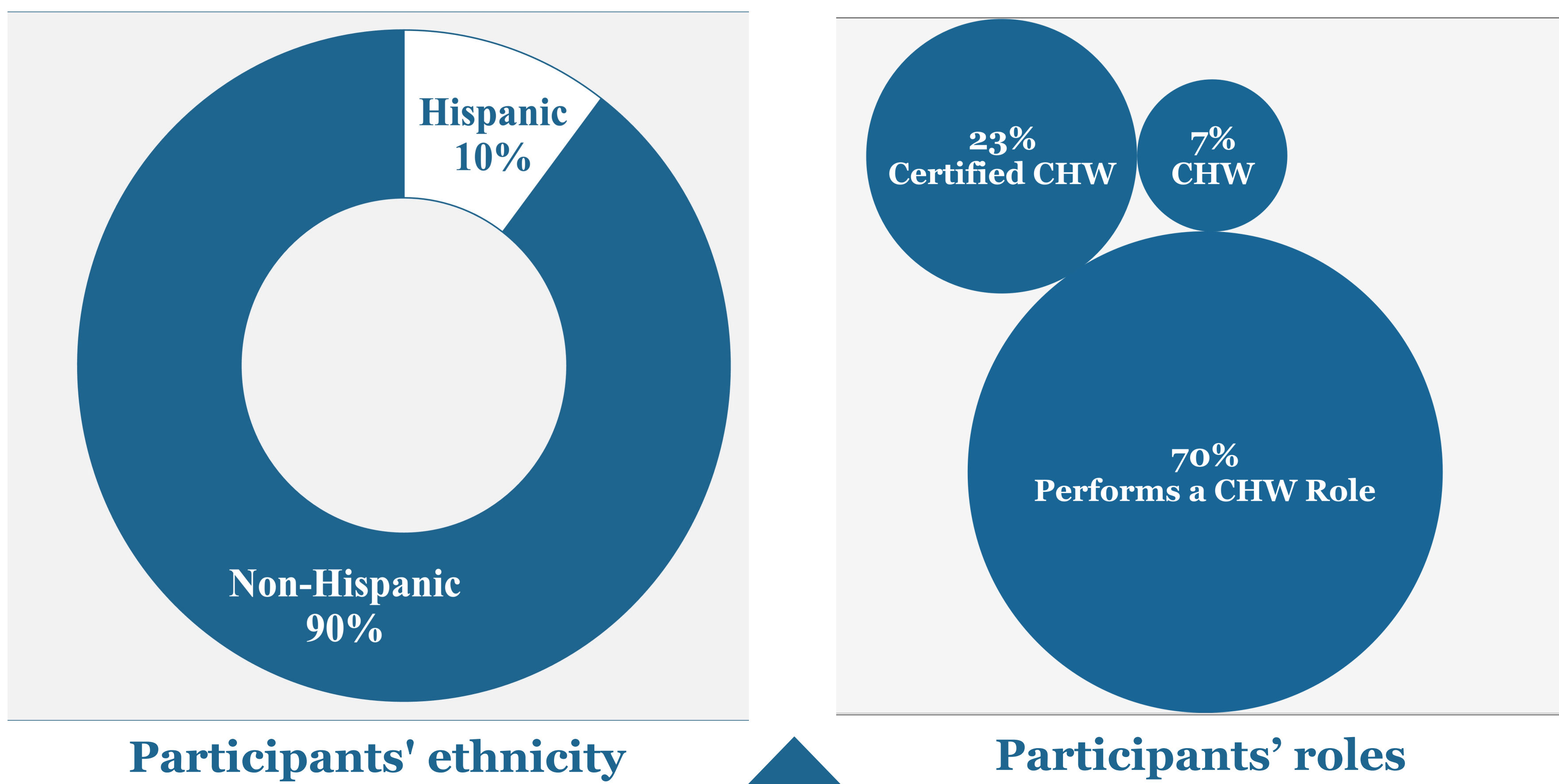
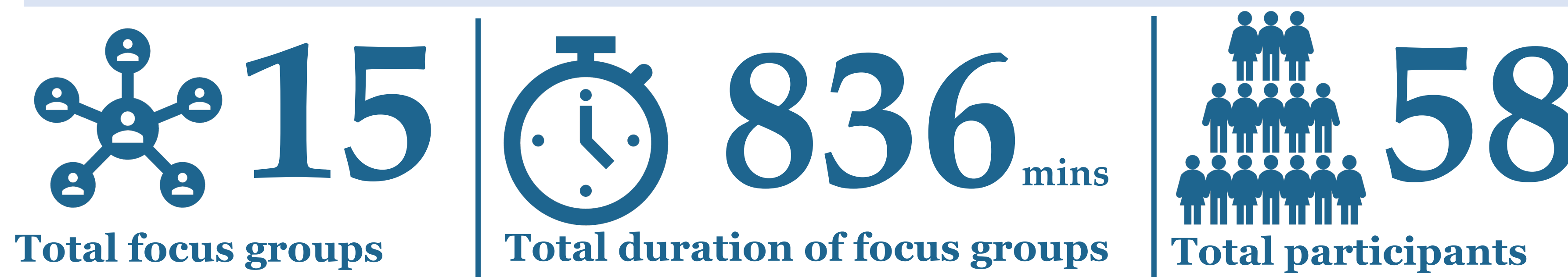
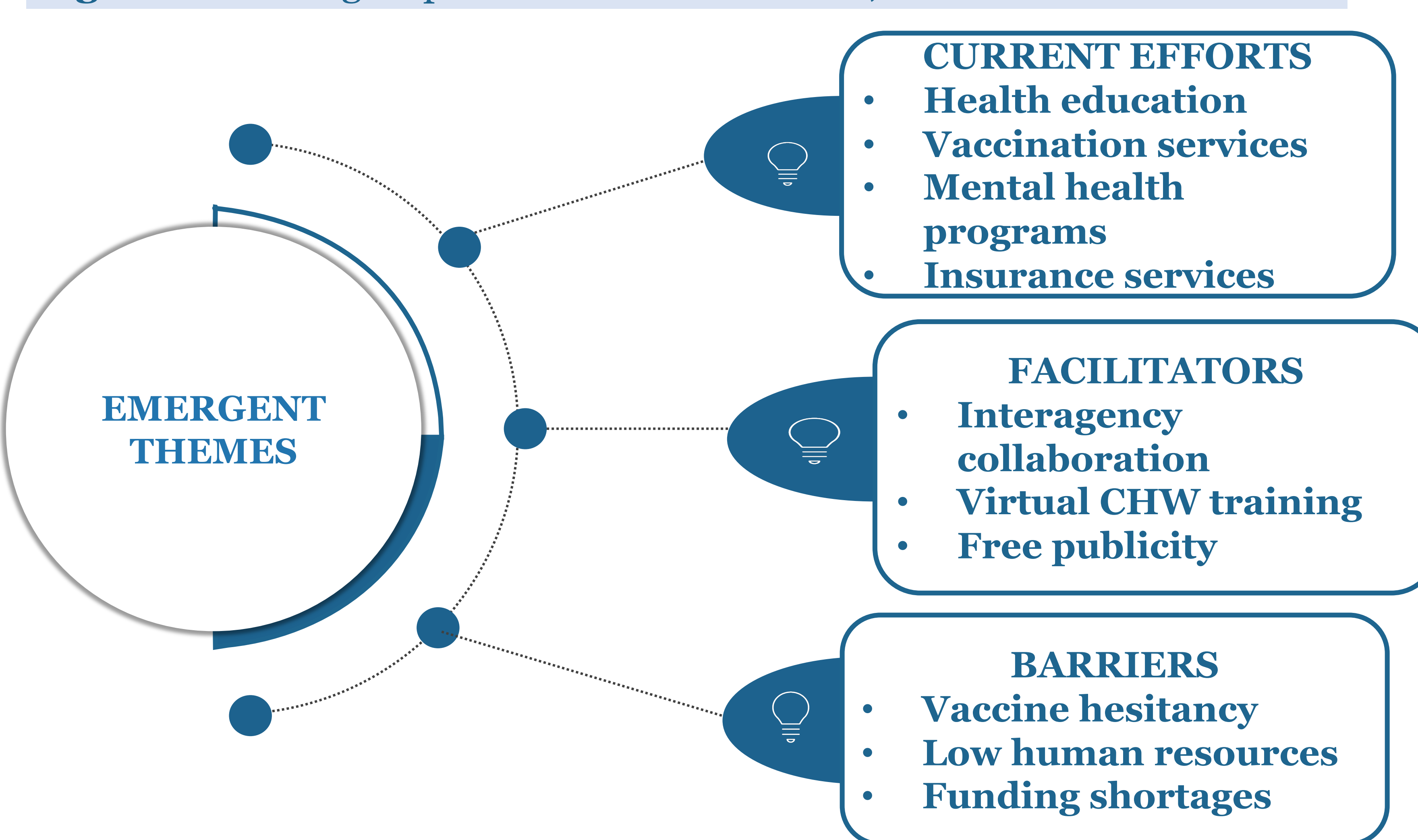
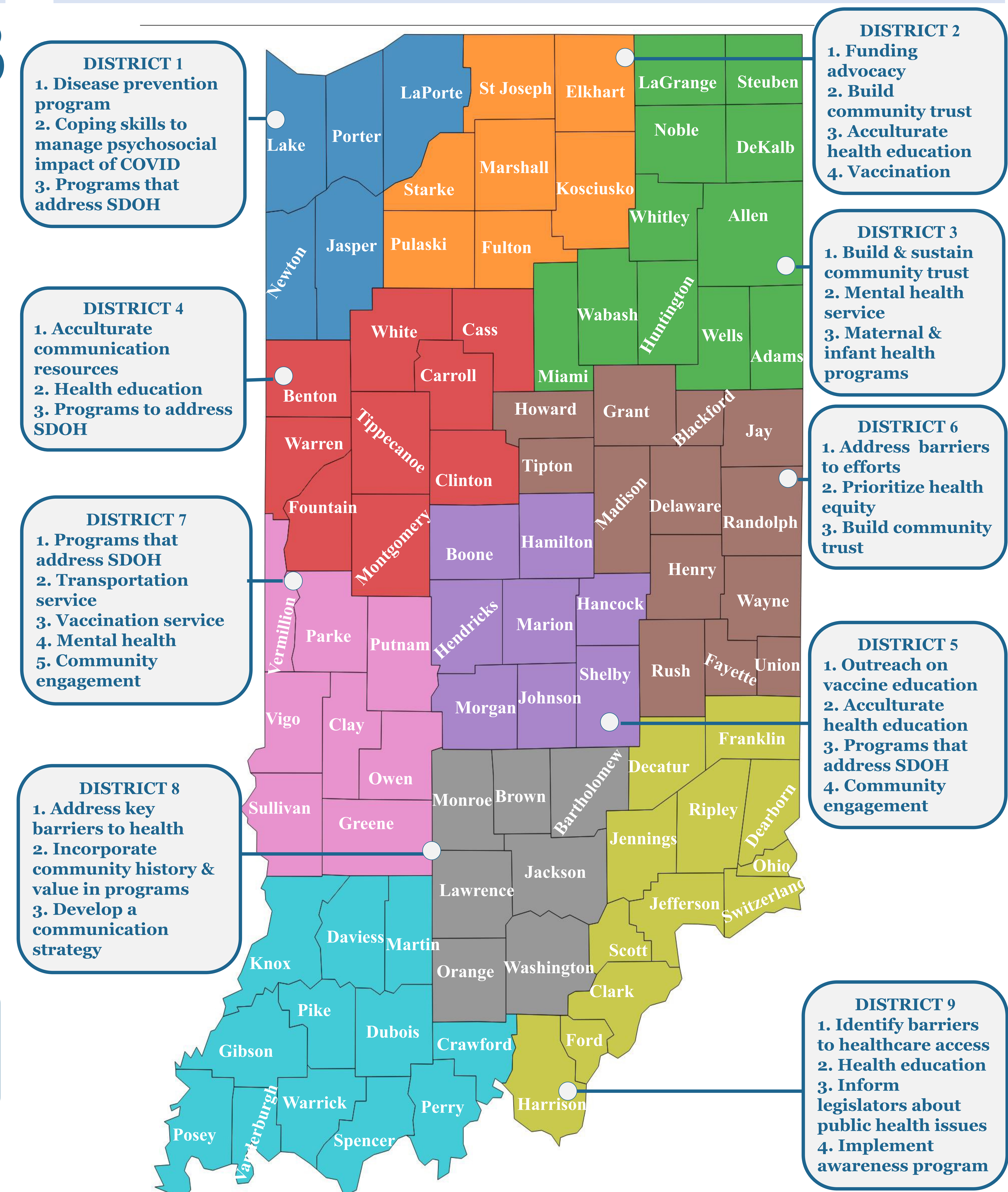


Figure 2. Focus group themes: Current efforts, facilitators and barriers



RESULTS

Figure 3. Focus group themes: Areas of concentration for district action plans (DAPs)



FUTURE DIRECTION

- Findings will inform phase 2 of this study where evidence-based DAPs will be implemented
- Model structure and DAP process will be adapted for sustainability and scalability

ACKNOWLEDGEMENTS

- Thank you to all the INHEC members and TechServ for their contributions to this project
- This IN HEC CHW Model initiative was funded by the CDC #NU50CK000503

